

# MONTHLY MEMBERSHIP PROGRESS REPORT

LOCATION TEXAS

District 2 A2

Results as of: 2/28/2022

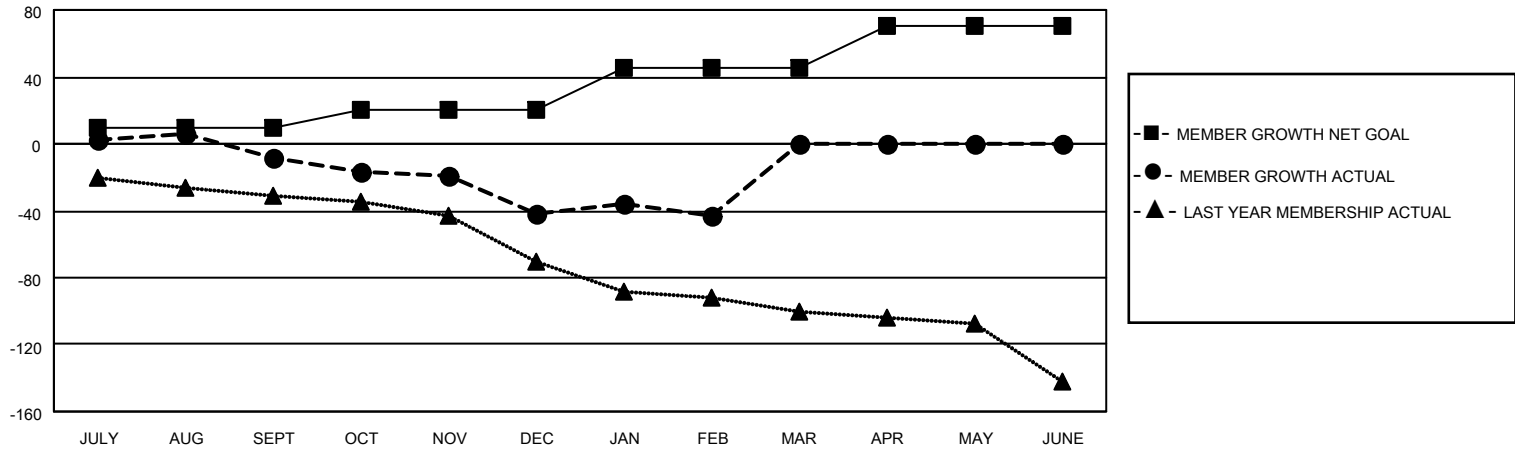
Clubs			
RESULTS FOR 2021-2022			
QUARTER	NEW CLUB GOAL	NEW CLUBS	DROPPED CLUBS
JULY/AUG/SEPT	0	0	0
OCT/NOV/DEC	0	0	1
JAN/FEB/MAR	1	0	0
APR/MAY/JUNE	1	0	0

Members			
RESULTS FOR 2021-2022			
QUARTER	MEMBER GROWTH NET GOAL	MEMBER GROWTH ACTUAL	DROPPED MEMBERS ACTUAL (including transfers)
JULY/AUG/SEPT	10	36	38
OCT/NOV/DEC	10	20	52
JAN/FEB/MAR	25	23	22
APR/MAY/JUNE	25	0	0

**GOALS AND ACTUAL NEW CLUBS CUMULATIVE**



**GOALS AND ACTUAL MEMBERS CUMULATIVE**



**DROPPED CLUBS: 1**

**27 CLUBS OF 63 ADDED 1 OR MORE NEW MEMBERS**

**GENDER DISTRIBUTION**

**DROPPED MEMBERS**

DECEASED	14
CLUB CANCELLED	14
OTHER	83
<b>TOTAL</b>	<b>111</b>

[CLICK HERE FOR CUMULATIVE MEMBERSHIP DATA](#)

MALE	888 (60.82%)
FEMALE	572 (39.18%)
NON BINARY	0 (0.00%)
PREFER NOT TO ANSWER	0 (0.00%)

TOTAL FAMILY UNIT MEMBERS 288

FAMILY MEMBERS PAYING HALF DUES 146